

Top and Bottom

Top and Bottom

Top

The highest part of something.
The uppermost surface of something.



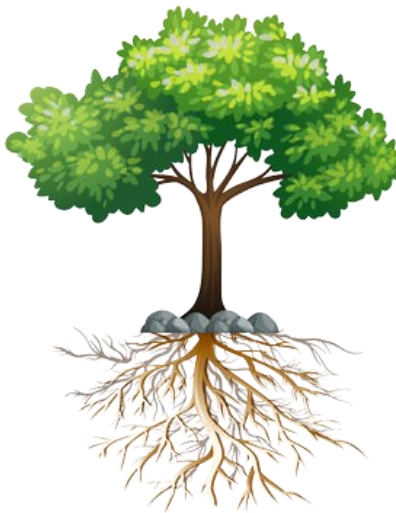
The **top** of the cake is **frosted**.

Bottom

The lowest part of something.
The underside or undersurface of something.



The **bottom** of the cake is **plain**.



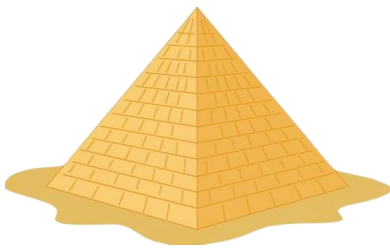
The **top** of the tree has **leaves**.

The **bottom** of the tree has **roots**.



Lick the scoop in the **top** of the ice cream

Bite the **bottom** of the cone



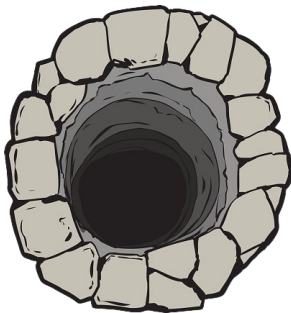
The **top** of the pyramid is very high

The **bottom** of the ocean is very deep

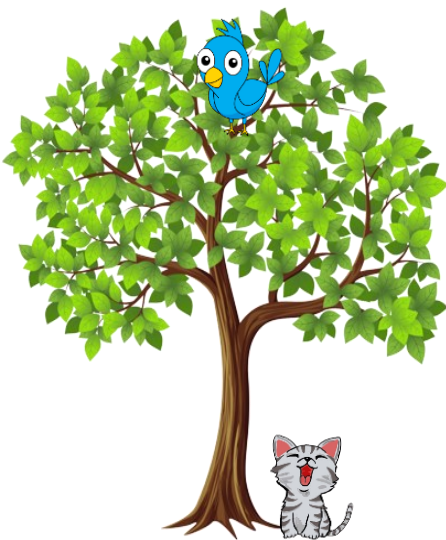




The pulley is in the **top** of the well

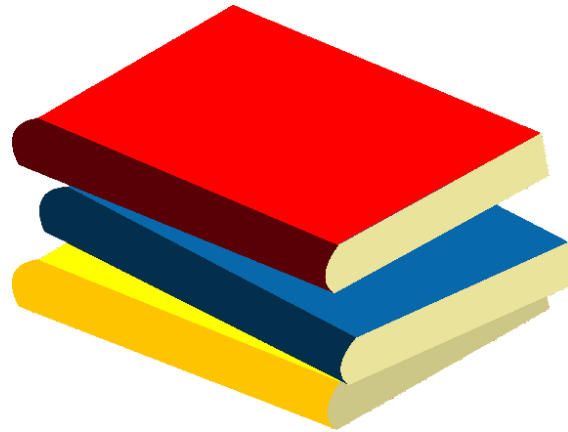


The **bottom** of the well is very dark



The **bird** is at the top of the tree.

The **cat** is at the bottom of the tree.



The red book is at the top.

The yellow book is at the bottom.



The boy is at the top.

The girl is at the bottom.