

# Big and Small

## Big and Small

### Big

Big refers to **large or great in dimensions, bulk, or extent.**

Example :

The parachute is **big**.



### Short

Small refers to **not large in size, number, amount, etc.**

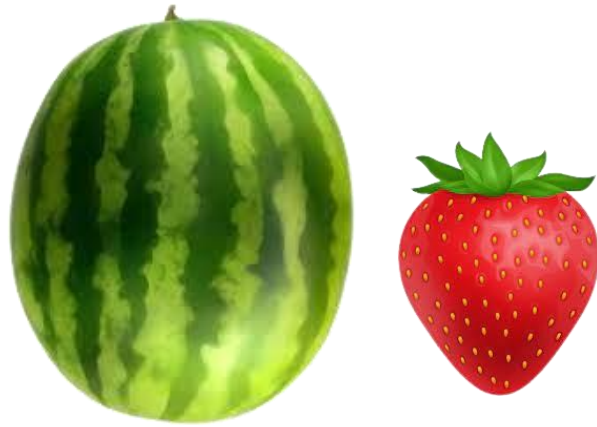
Example :

The balloon is **small**.



The **elephant** is **big**.

The **ant** is **small**.



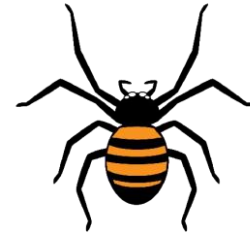
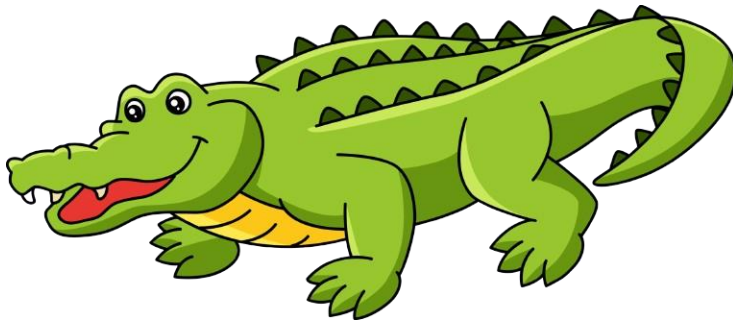
The **watermelon** is **big**.

The **strawberry** is **small**.



The **elephant** is **big**.

The **mouse** is **small**.



The **crocodile** is **big**.

The **spider** is **small**.



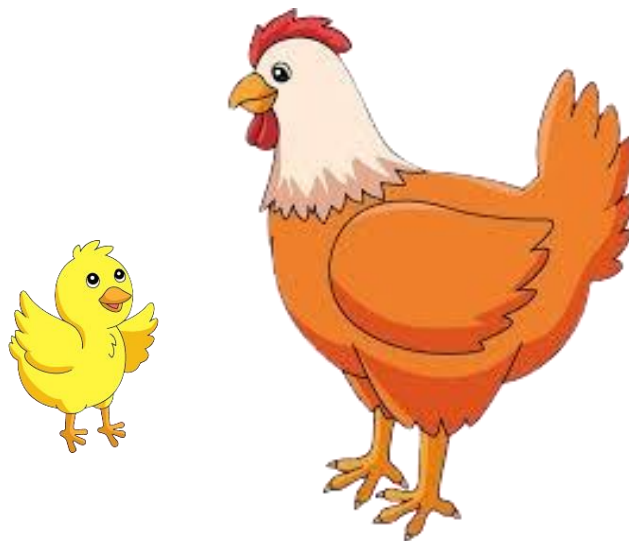
The **basket ball** is **big**.

The **tennis ball** is **small**.



The **pumpkin** is **big**.

The **beans** is **small**.



The **hen** is **big**.

The **chicken** is **small**.