



# Near and farther



## Near and farther

- Farther means "at a greater distance."

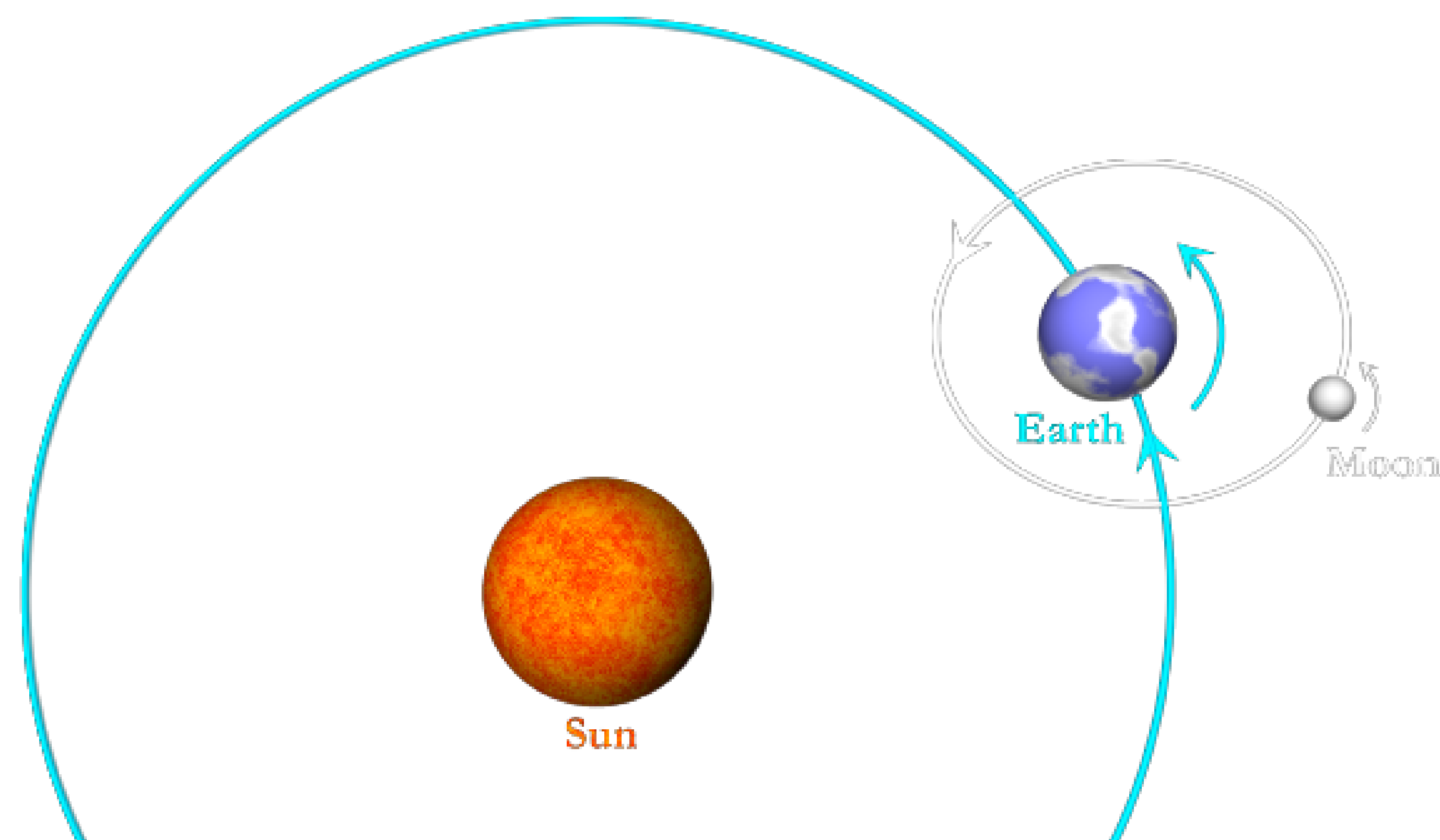


The blue car is nearer to the house.

- Nearer means "at a smaller distance."

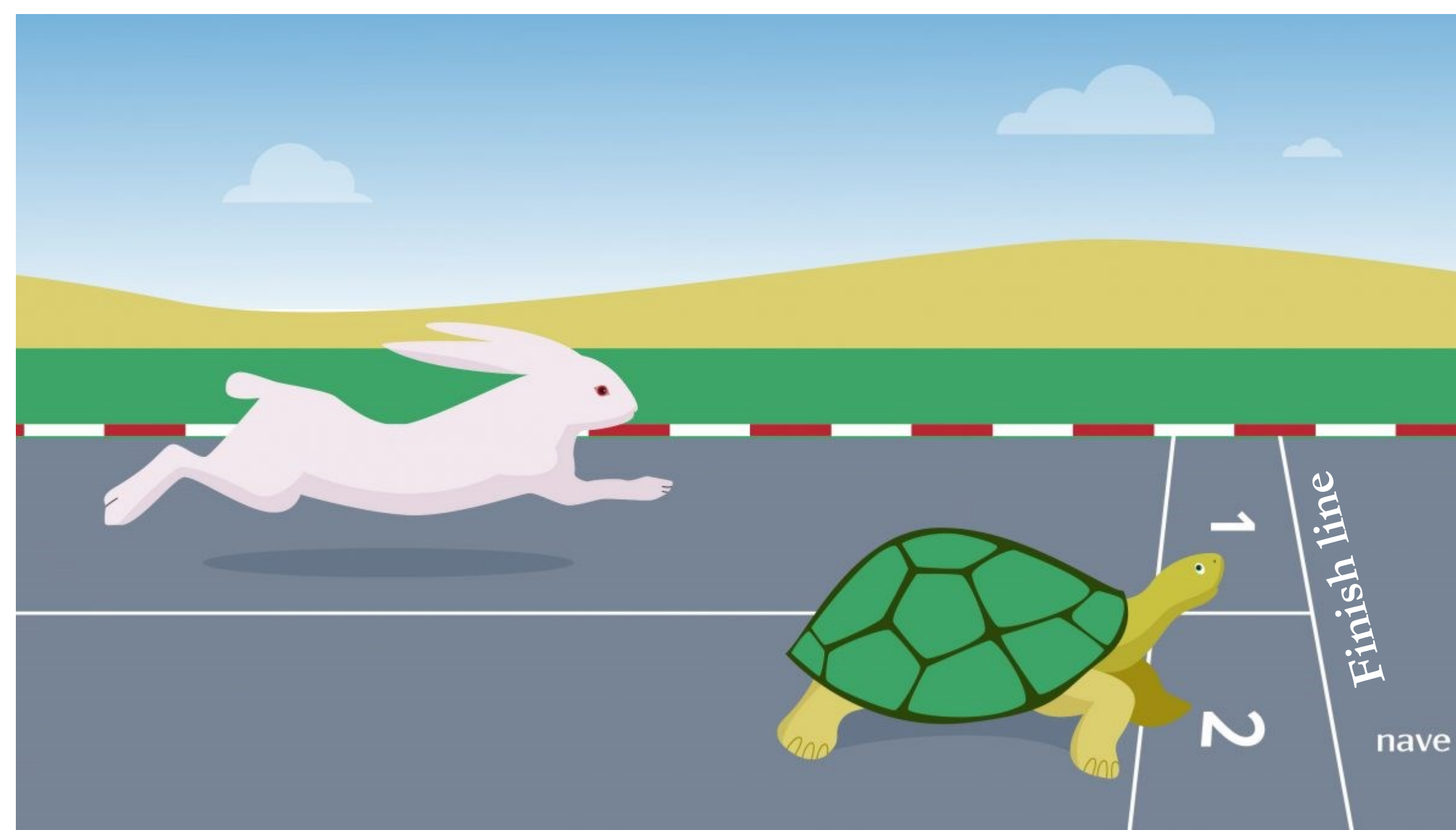


The red car is farther to the house.



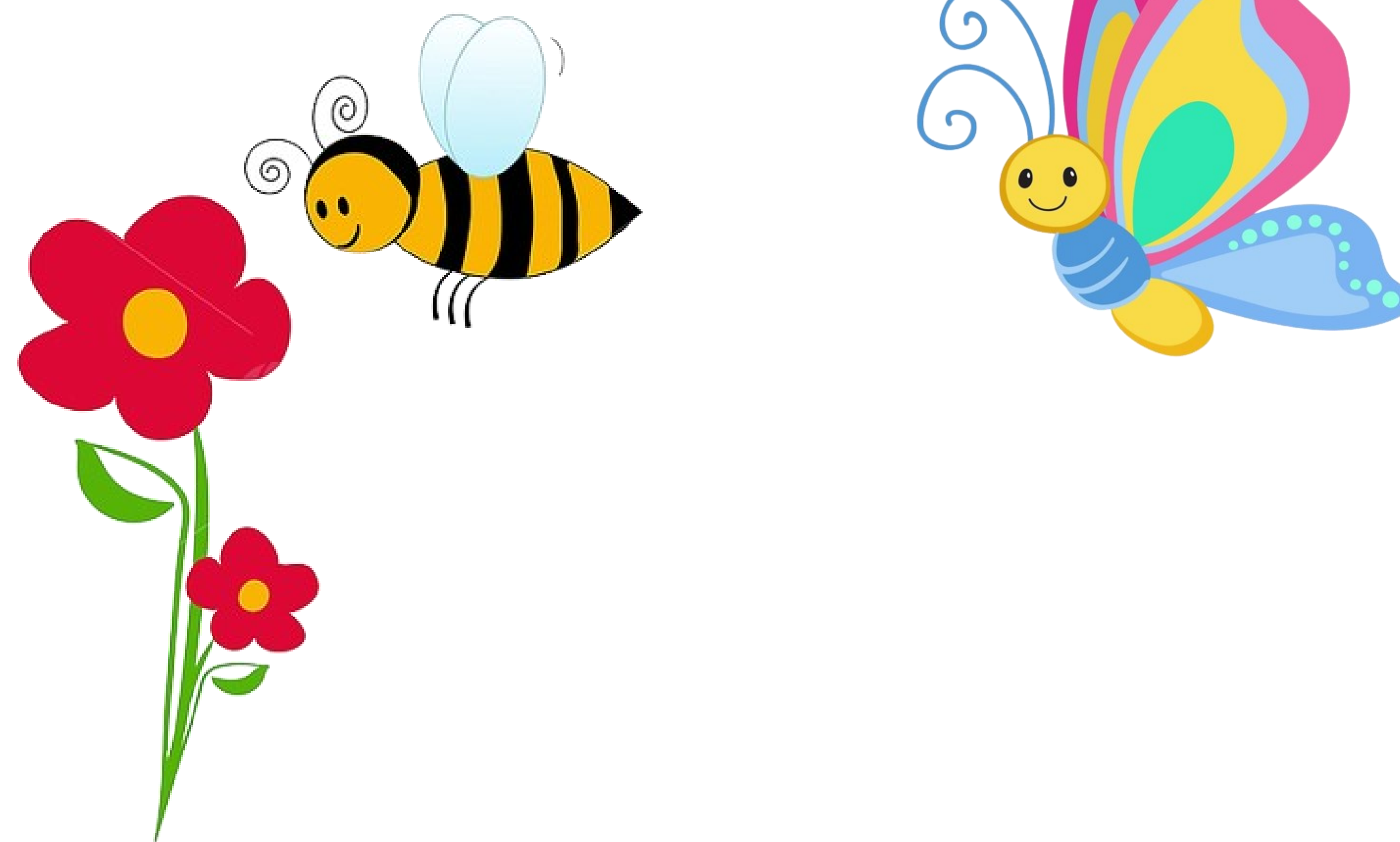
The moon is nearer to the earth.

The sun is farther to the earth.



The **turtle** is **nearer** to the finish line.

The **rabbit** is **farther** to the finish line.



The **bee** is **nearer** to the flower.

The **butterfly** is **farther** to the flower.



The **bird** is **nearer** to the tree.



The **bird** is **farther** to the tree.



The airplane is **nearer** to the airport.

The airplane is **farther** to the airport.





The boat is **nearer** to the **shore**.

The boat is **farther** to the **mountain**.





• HARBOUR •



The ship is **nearer** to the **lighthouse**.

The ship is **farther** to the **harbour**.