

Slide effects

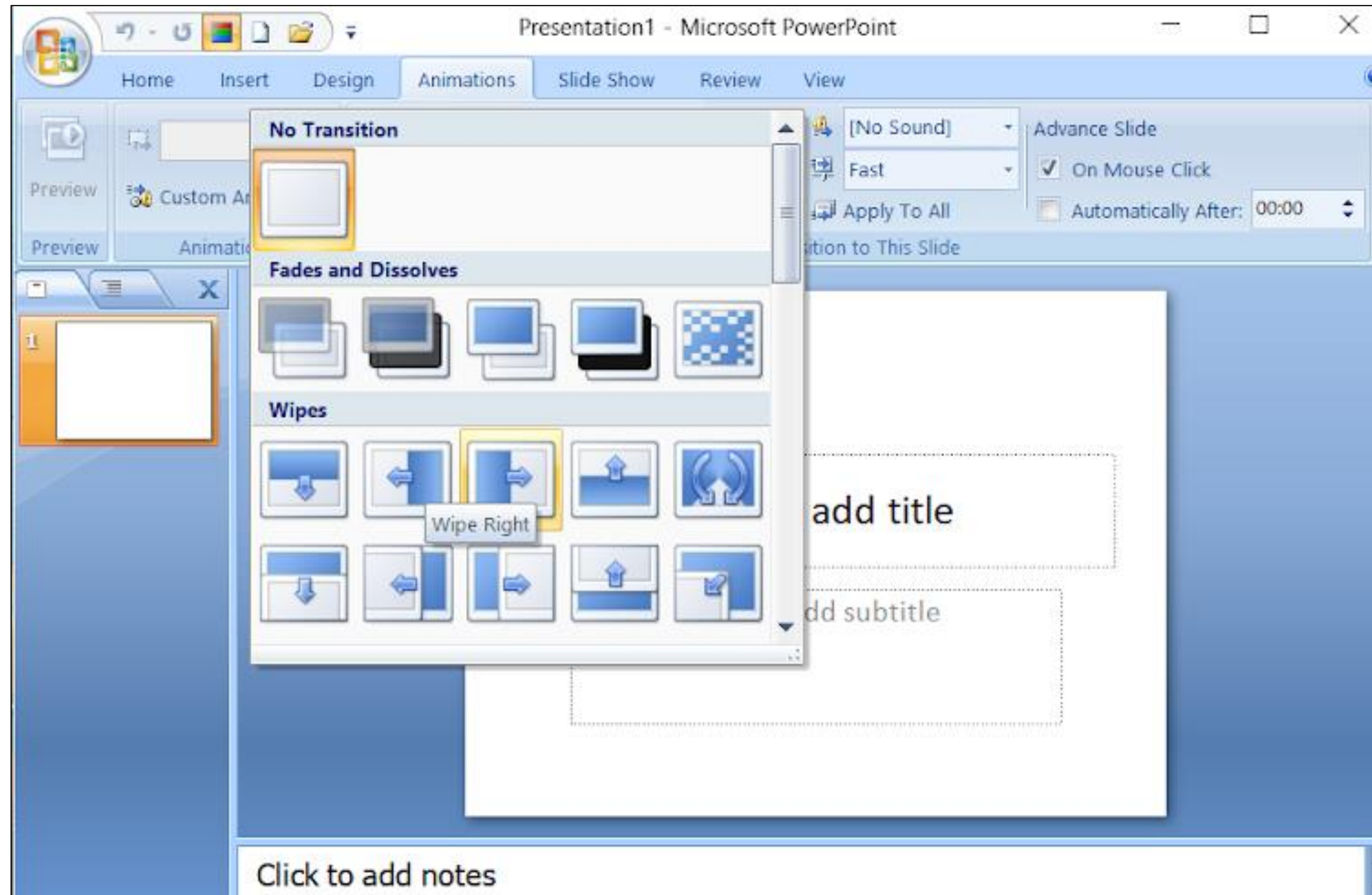




Slide animation

- ❖ An **animation** effect is a special visual or sound effect added to a text or an object on a slide.
- ❖ It is applied to individual elements on a single slide such as title, chart, image, or individual bullet point.
- ❖ It is similar to transitions.





Slide animation



Apply transition

- ❖ Select the slide that you want apply transition.
- ❖ In animation tab click the transition that you want like fade, push, split, wipe, Random bars etc.,

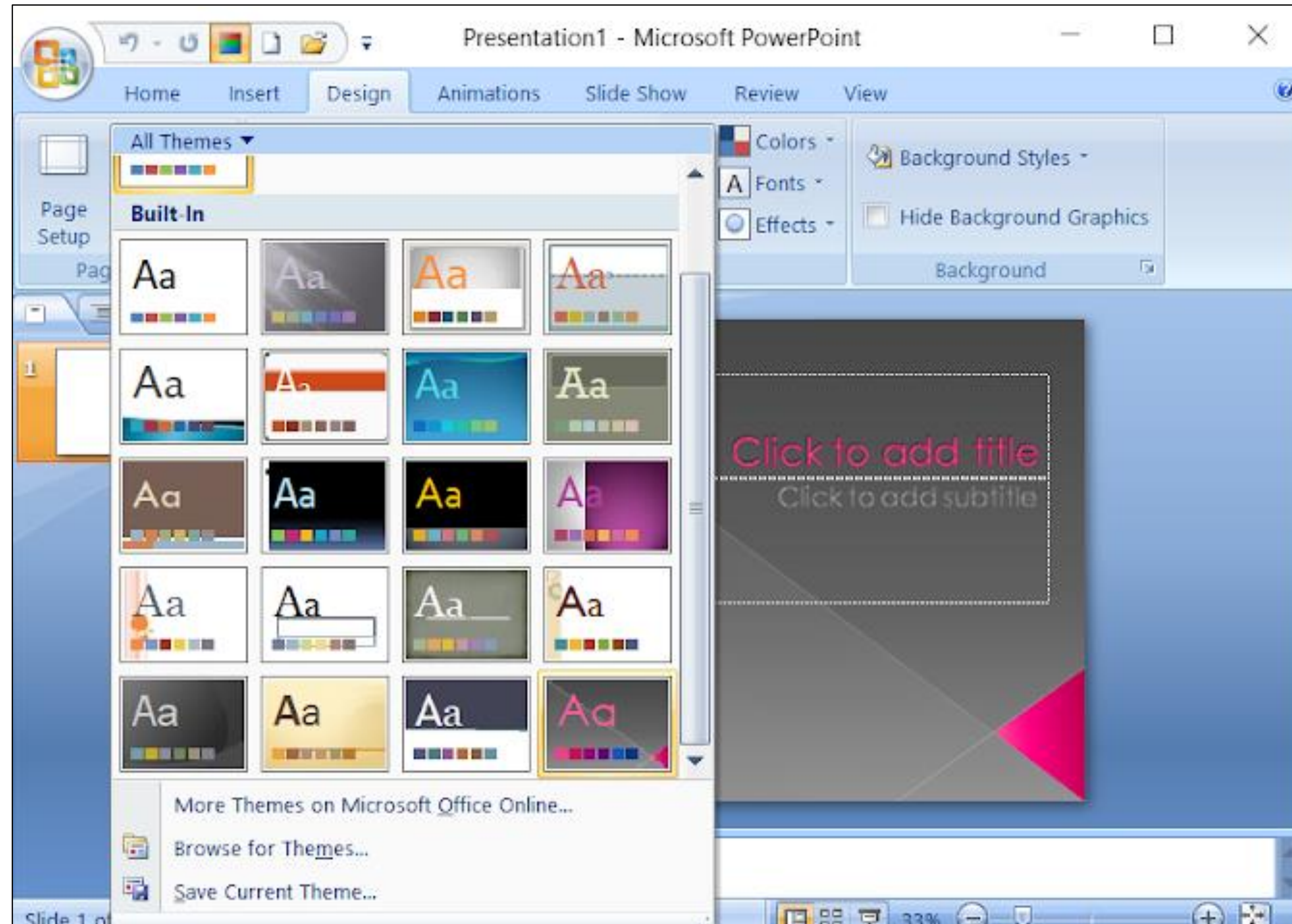




Slide theme

- ❖ A **theme** is a predefined set of colors, fonts, and visual effects that you apply to your slides for a unified & professional look.
- ❖ All of the themes included in PowerPoint are located in the Themes group on the Design tab.





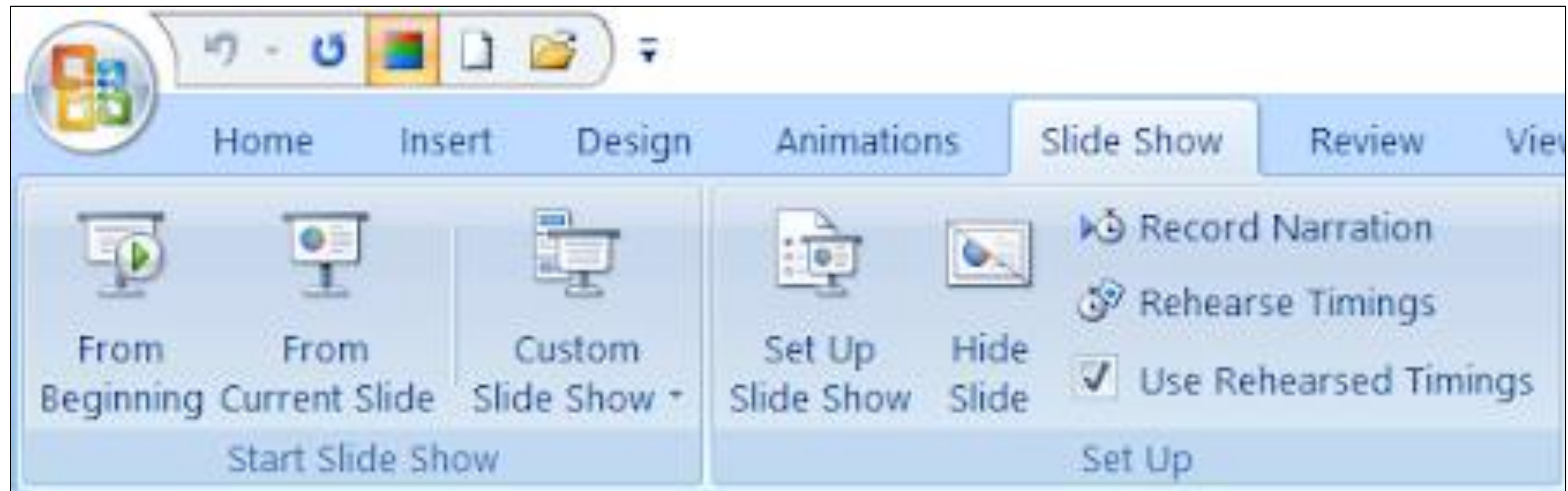
Slide theme



Slide show

- ❖ A PowerPoint slideshow is a presentation and it allows users to add audio, visual and audio/visual features to a presentation.
- ❖ **From Beginning** command on the Quick Access Toolbar, or press the **F5** key in keyboard. The presentation will appear in full-screen mode.





Slide show



❖ To start the presentation from current slide, Select the **Slide Show** **view** command at the bottom of the PowerPoint window, or **from** **current Slide** Command on the quick access Toolbar.





- ❖ Using **Resolution** command on the toolbar, the user can change the resolution of the slide.
- ❖ By default the presentation resolution in **1280 X 720** pixels.

