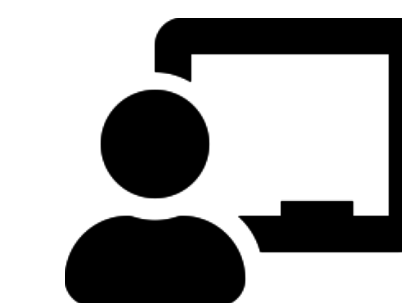


Top and Bottom



Top and Bottom



Top

The highest part of something.
The uppermost surface of something.



The **top** of the cake is frosted.

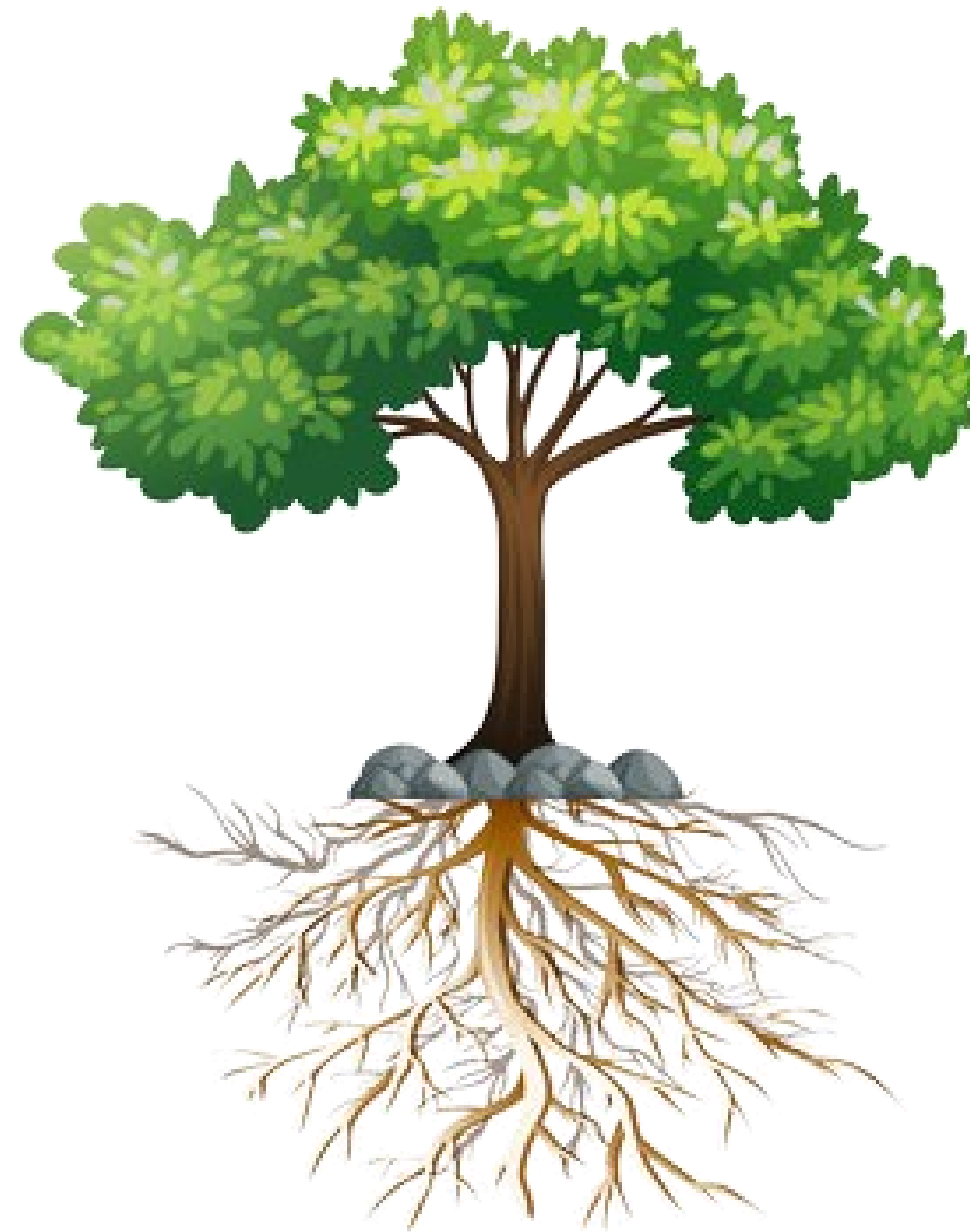
Bottom

The lowest part of something.
The underside or undersurface of something.



The **bottom** of the cake is plain.





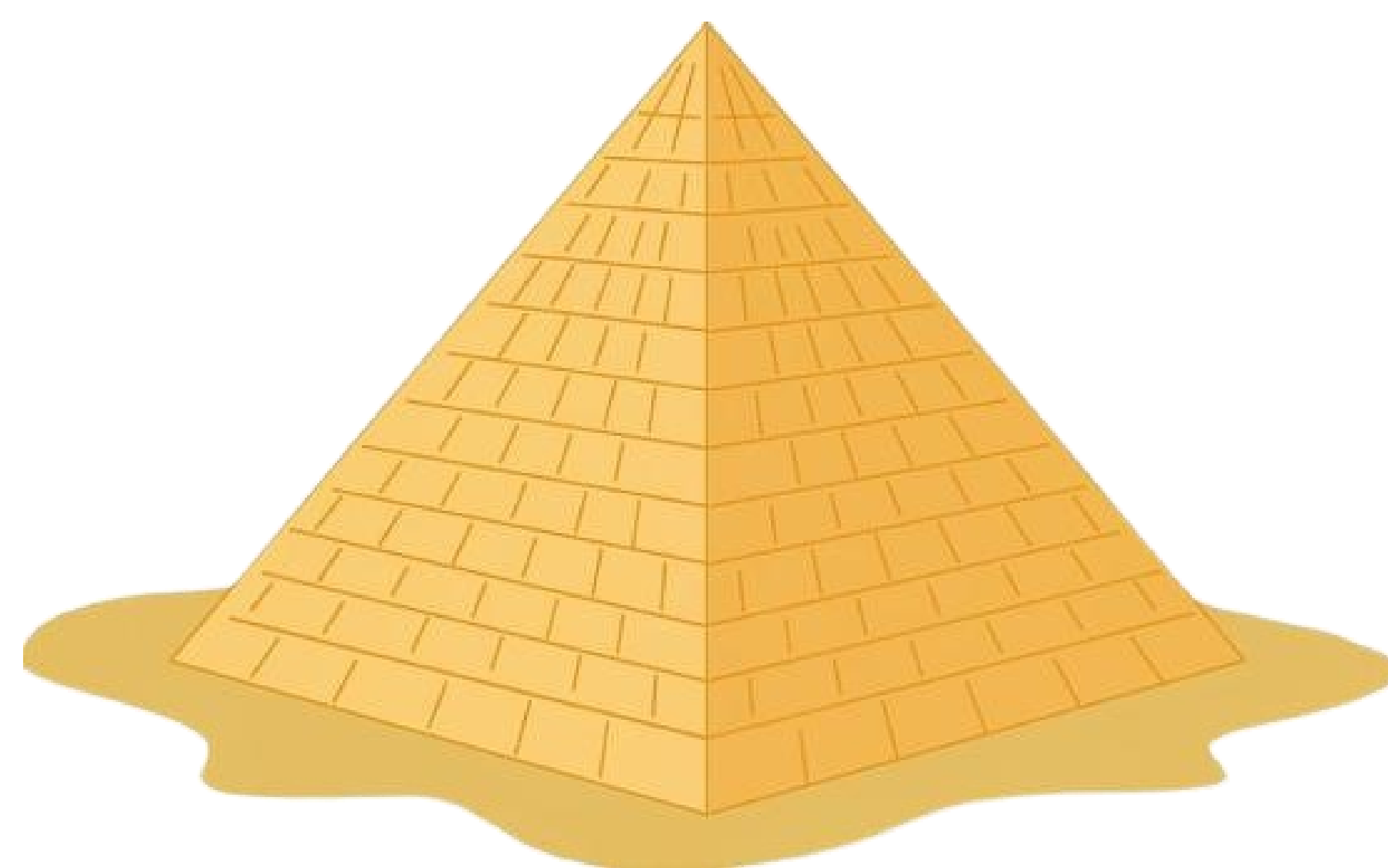
The **top** of the tree has leaves.

The **bottom** of the tree has roots.



Lick the scoop in the **top** of the ice cream

Bite the **bottom** of the cone



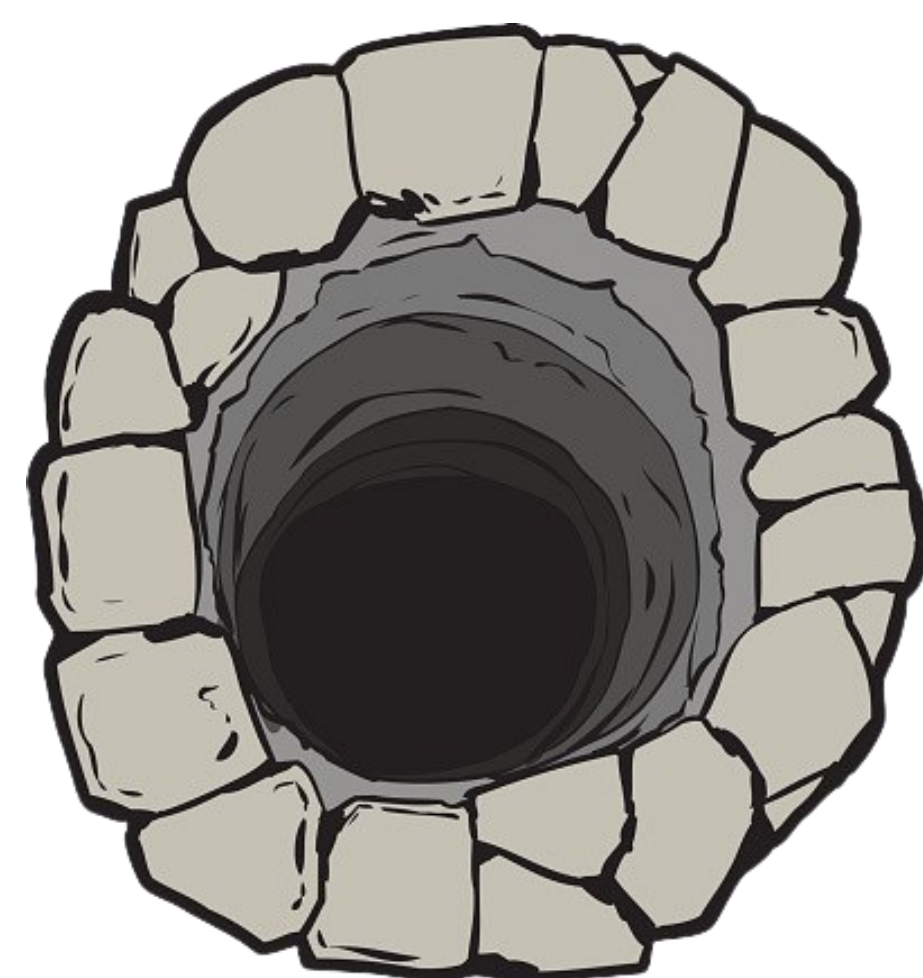
The **top** of the pyramid is very high

The **bottom** of the ocean is very deep

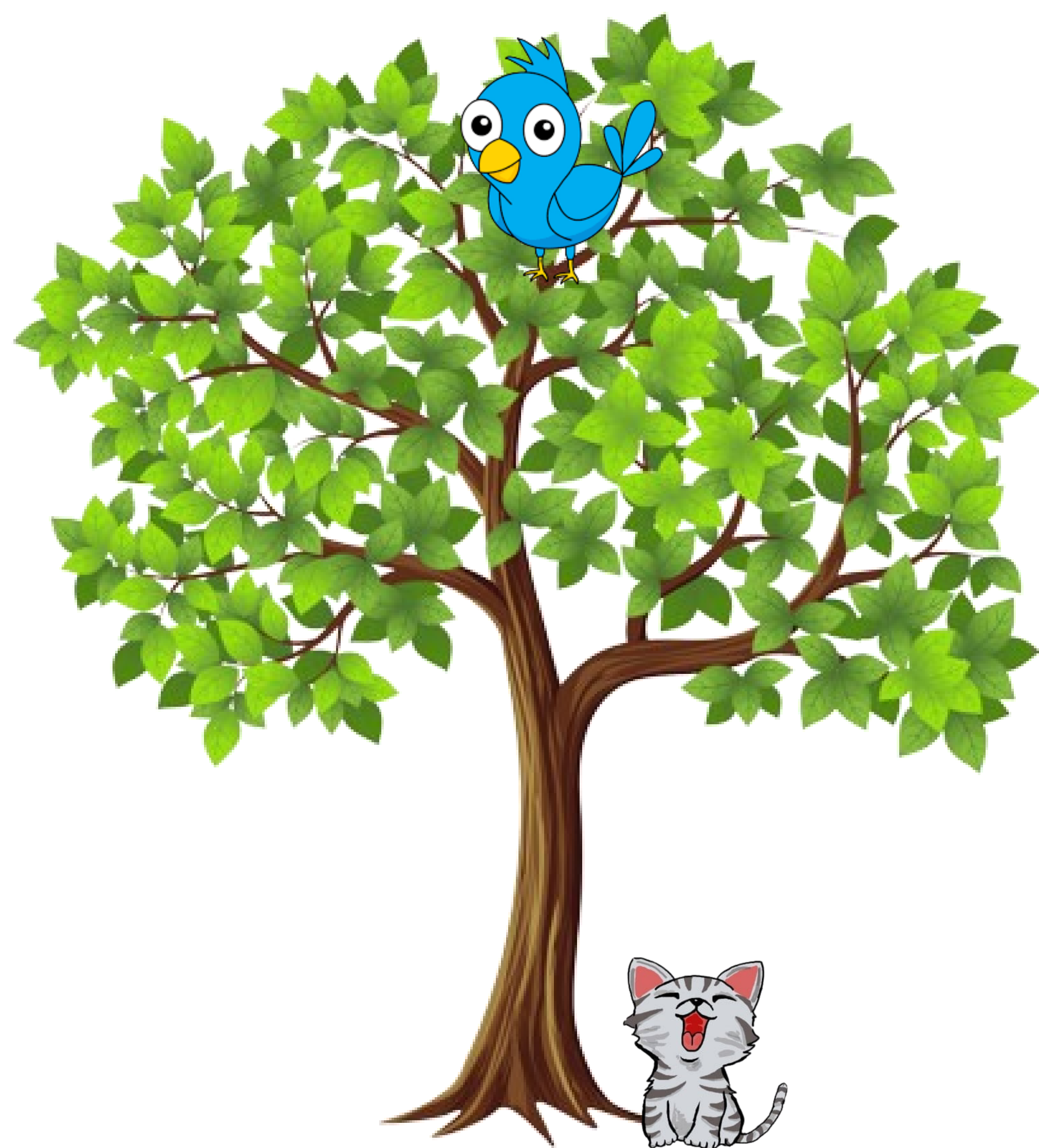




The pulley is in the **top** of the well

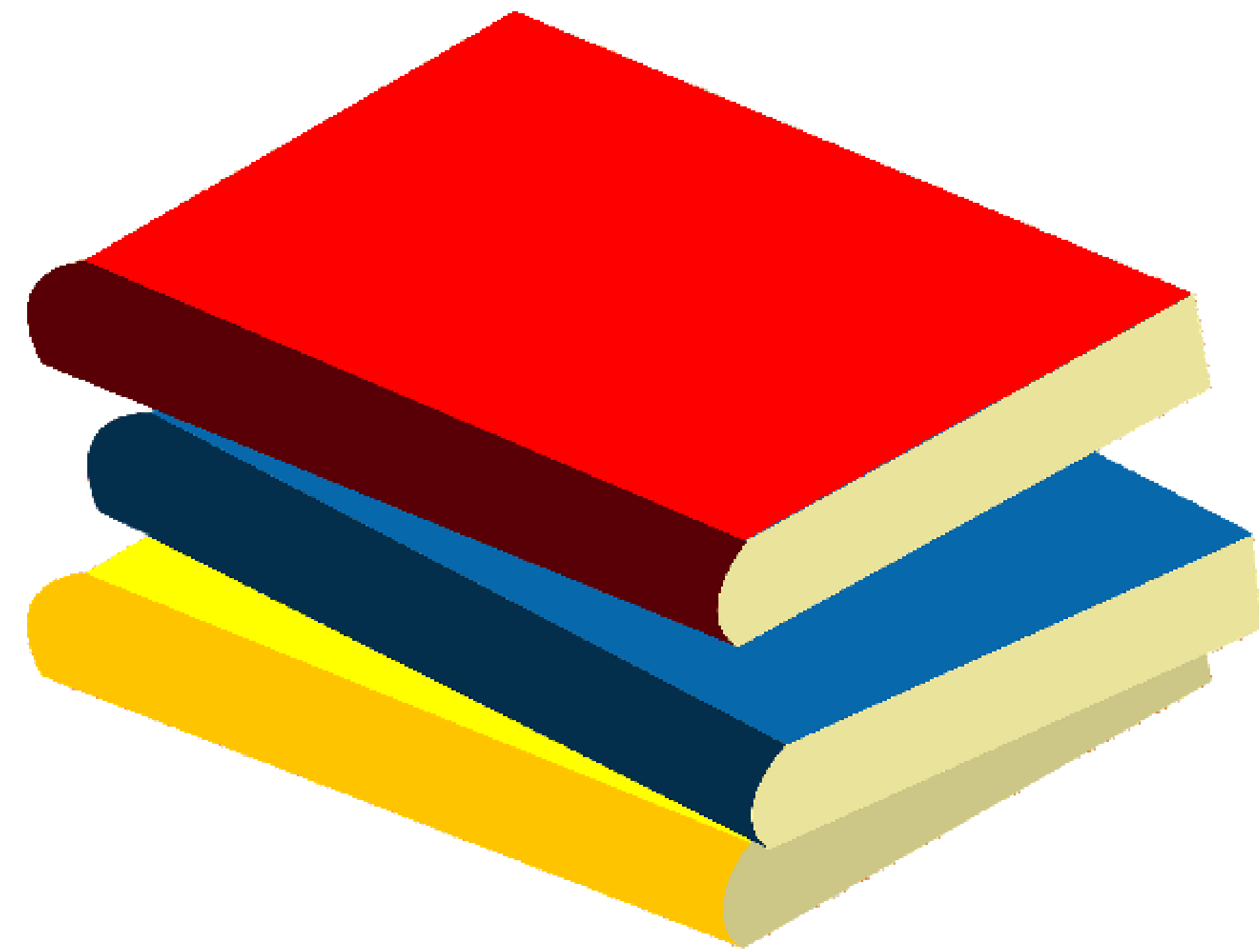


The **bottom** of the well is very dark



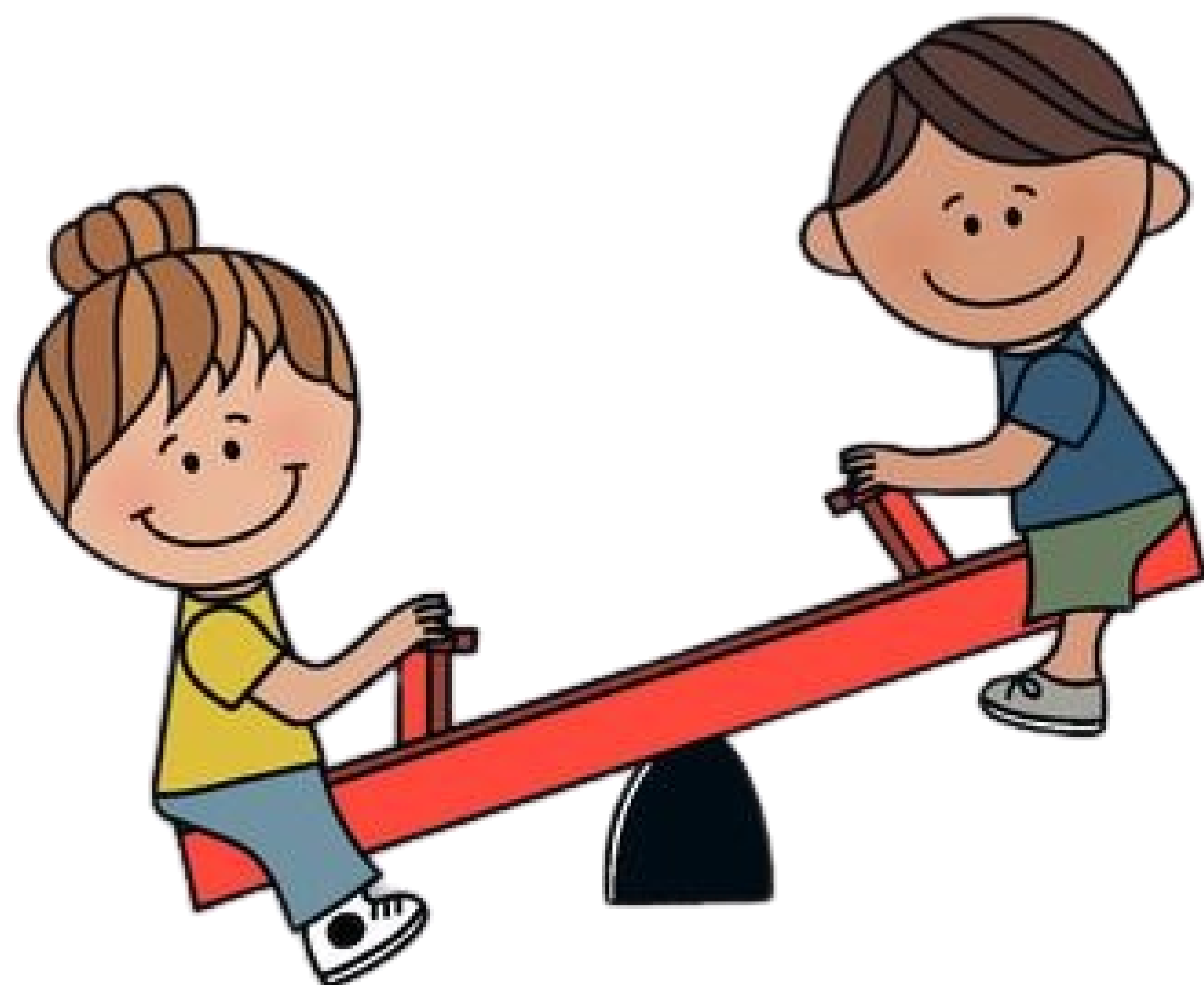
The **bird** is at the **top** of the tree.

The **cat** is at the **bottom** of the tree.



The red book is at the top.

The yellow book is at the bottom.



The **boy** is at the top.

The **girl** is at the bottom.