

**GREATER THAN OR
LESS THAN OR
EQUAL TO**



Which plate has less cookies?



Plate 1



Plate 2

Count and say which flower wash has more flowers?

Flower wash 1



Flower wash 2



Compare the umbrellas in the boxes.



Anu and Arun collect some marbles. Who got less marbles?



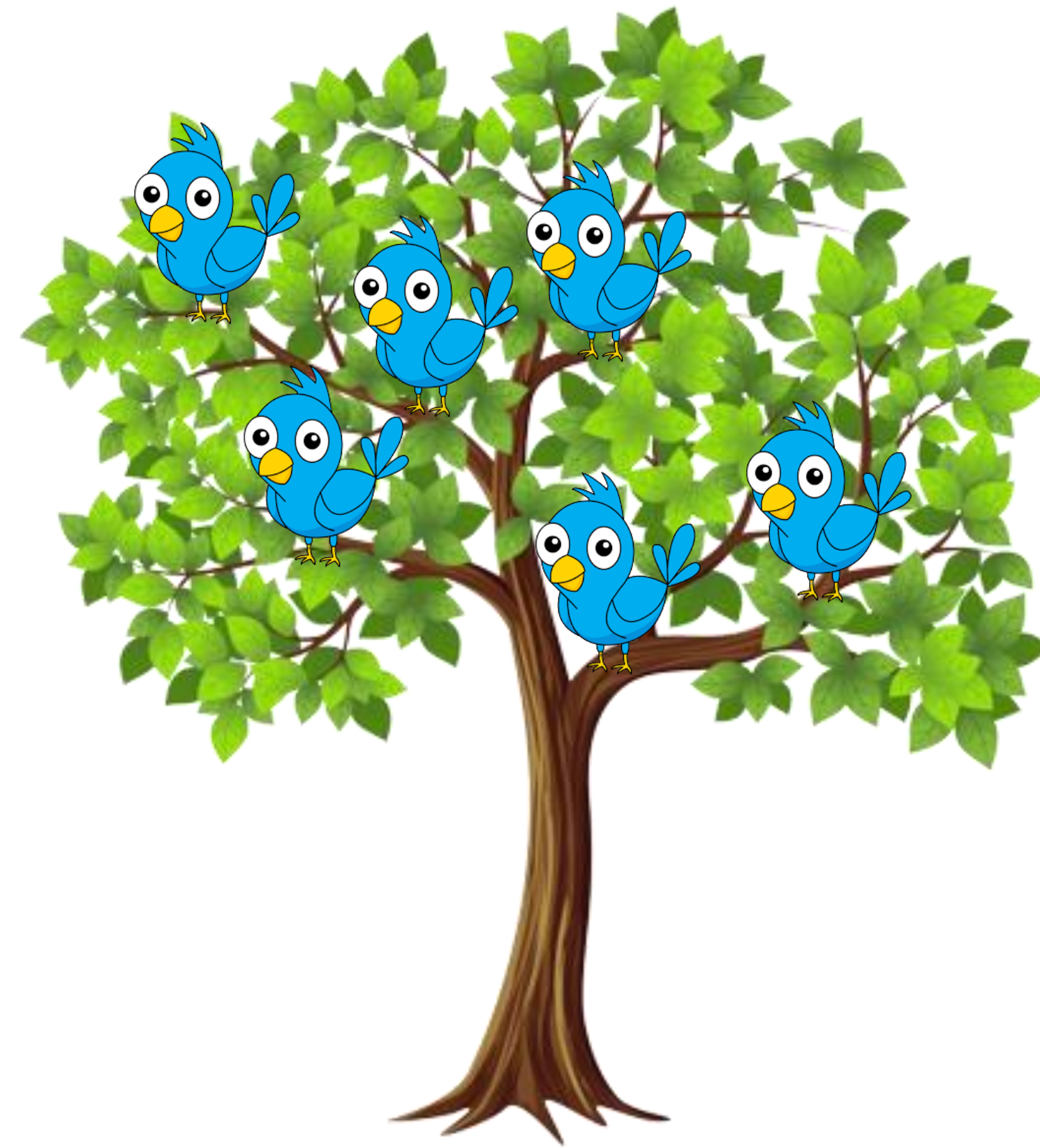
Anu



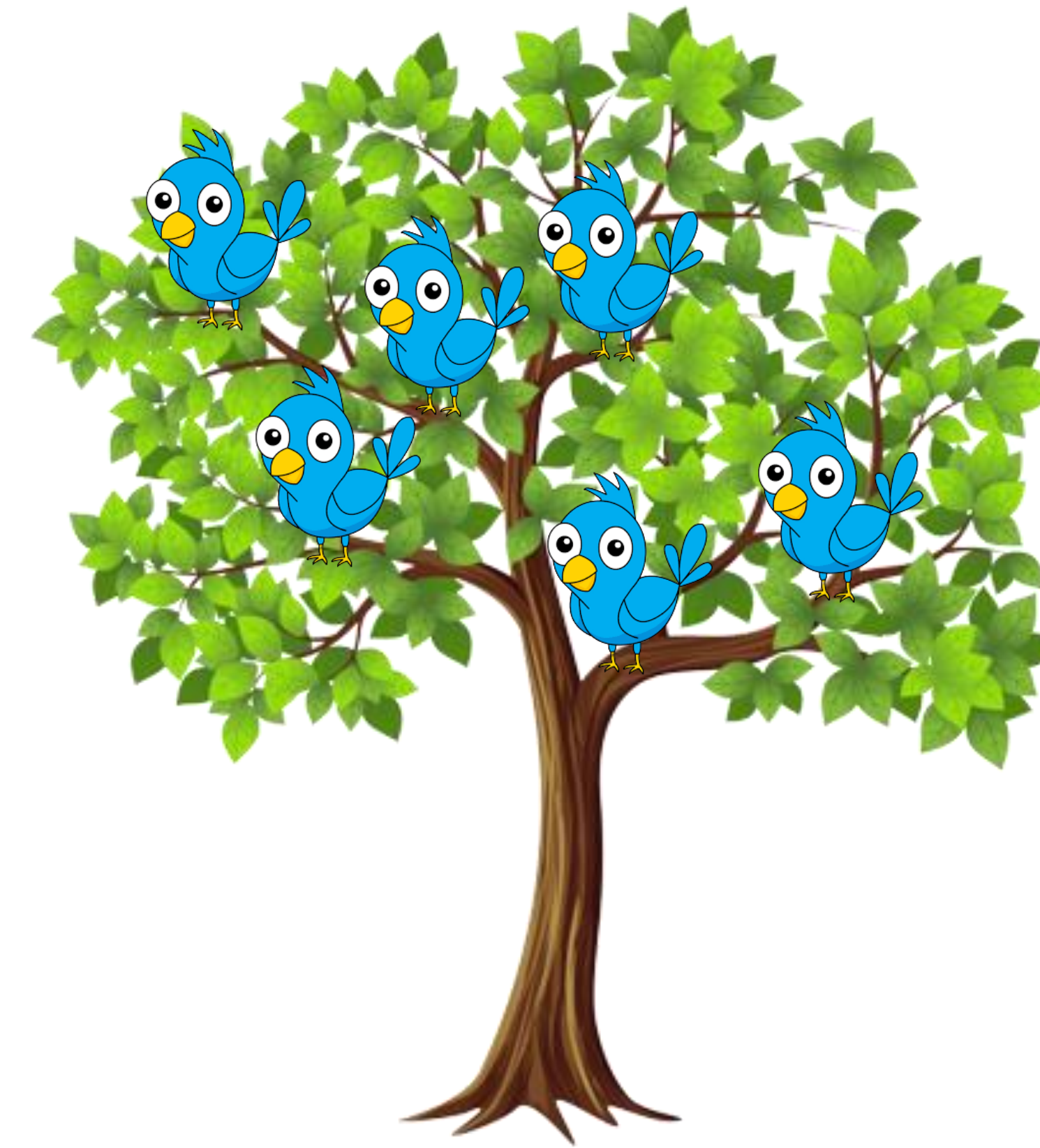
Arun

Count and say which tree has more birds?

Tree 1



Tree 2



**Mano went to theater and bought French fries and a drink.
Which has more cost?**



\$ 2



\$ 10